

Pulsar

for Trombone with Signal Processing

Seth Shafer

Delay Instructions

I.

Stereo Delay:

Set Left to delay one half note, 50% feedback.

Set Right to delay one whole note, 50% feedback.

Tempo: ♩ = 80

II.

Mono Delay:

Set to delay one quarter note, 30% feedback.

Reverb:

Set to large room with 50% dry, 50% wet.

Tempo: ♩ = 138

III.

Mono Delay:

Set to delay between 5 and 6 seconds.

Filter:

Set to gradually open and close following the delay's envelope.

Tempo: ♩ = 46

IV.

Stereo Delay:

Set Left to delay one quarter note, 15% feedback.

Set Right to delay one half note, 15% feedback.

Tempo: ♩ = 160

Duration: 10 minutes

IV.

♩ = 160

mf

gradually slowing----- into phase-- out of phase *a tempo*

p *ff* *mf*

gradually slowing----- into phase-- out of phase

p *ff*

a tempo

pp *subito f*

subito pp *subito f*



subito pp

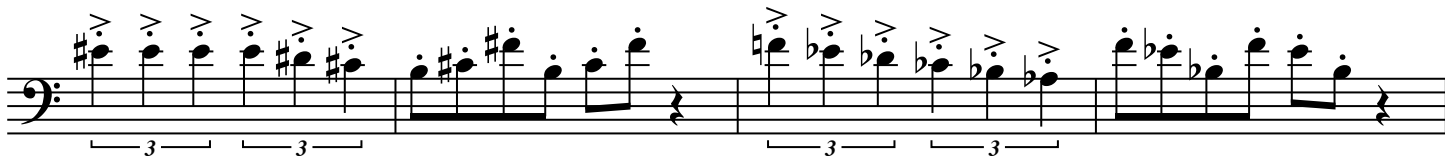
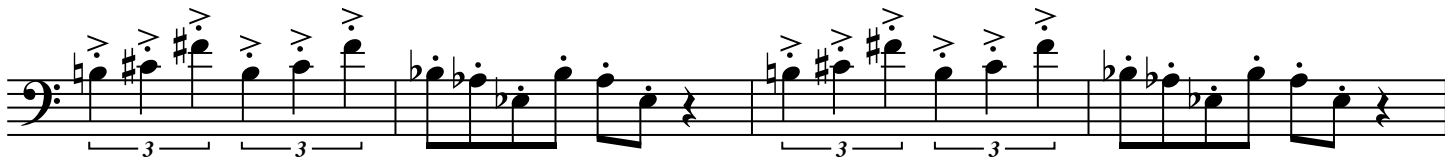


gradually slowing-----into phase- out of phase *a tempo*

p

ff

f



mp

